

Cupcake Toppers

Instructions

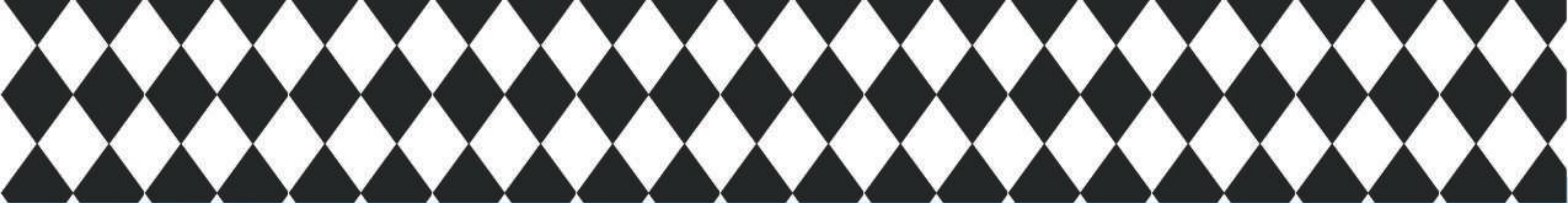
CUT OUT EACH CUPCAKE TOPPER AND TAPE EACH ONE TO A TOOTH PICK. THEN PUSH THE TOOTH PICK INTO THE CUPCAKE FOR DECORATION.



Pin the Tail on the Pony

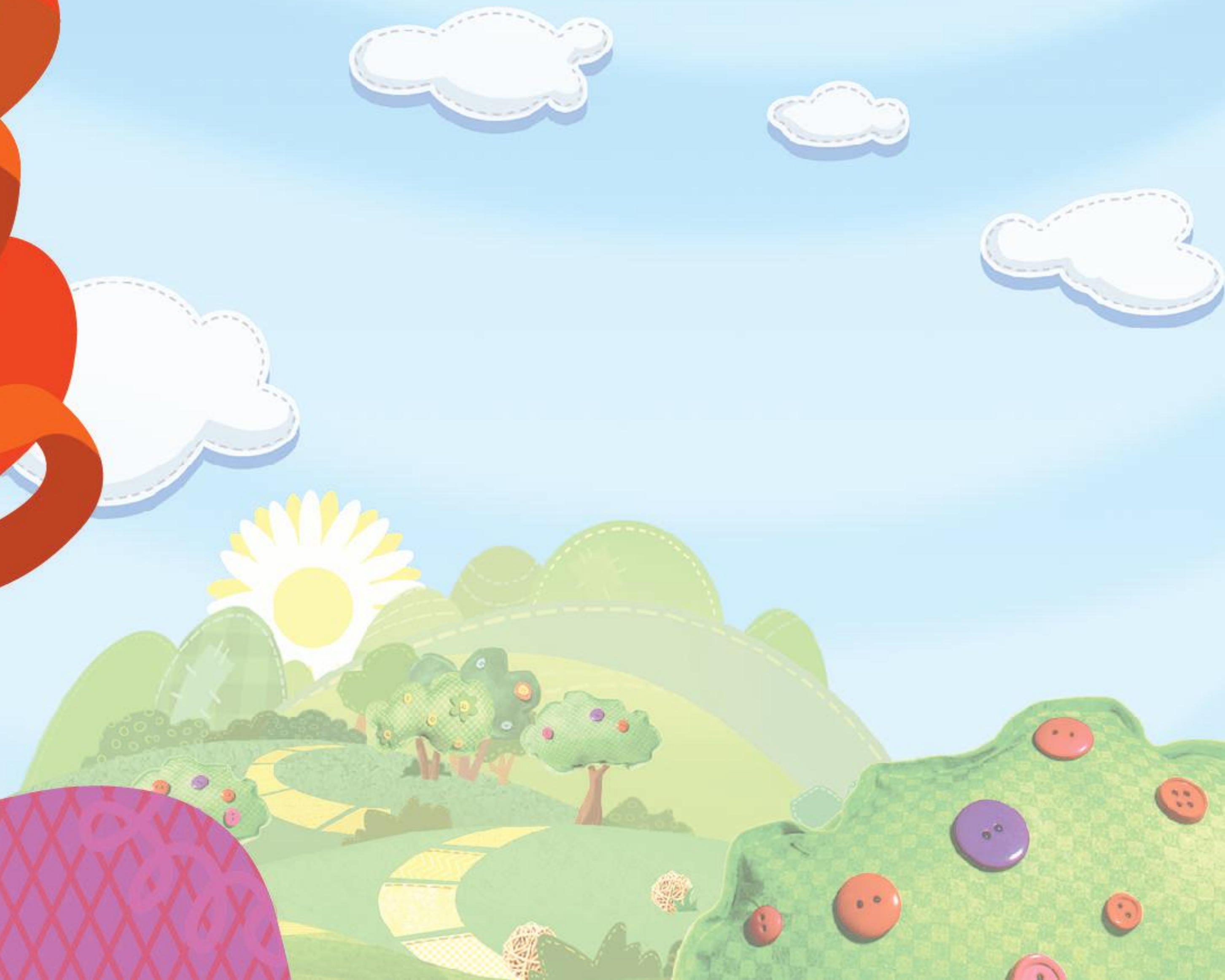
Instructions: PRINT THE FOLLOWING SHEETS AND TAPE THEM TOGETHER TO MAKE A POSTER OF CHECKERS. PRINT THE TAILS AND CUT OUT, OR PURCHASE ORANGE CURLING RIBBON AND CUT PIECES OF RIBBON. APPLY TAPE ON RIBBON OR TAILS FOR EACH CHILD TO STICK TO THE POSTER. BLINDFOLD THE CHILD AND SPIN THEM AROUND THREE TIMES, THEN FACE THEM TOWARDS THE POSTER AND ALLOW THEM TO TAPE THE TAIL ON THE PONY. WRITE THE INITIALS OF THE CHILD NEXT TO WHERE THEY PLACED THE TAIL. THE CHILD WHO PLACES THE RIBBON CLOSEST TO THE PONY'S TAIL WINS A MINI LALALOOPY DOLL.





Lalaloopsy Ponies™

The Big Show













#LALALOOPY    

Lalaloopsy Ponies

The Big Show



#LALALOOPY    

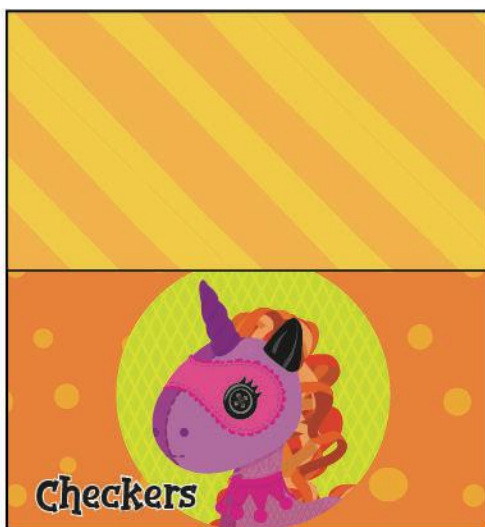
Lalaloopsy Ponies

The Big Show

Place Cards & Party Ideas

PARTY IDEAS

1. PLACE FLOWER BOUQUETS ON TABLES
2. PREPARE POPCORN CONES
3. PREPARE PIN THE TAIL ON THE PONY GAME
4. CUT OUT CUPCAKE TOPPERS AND STRAW DECORATIONS
5. PRINT AND PREPARE PUZZLES
6. PLAY MUSICAL CHAIRS TO "A CAROUSEL LIFE"
7. PRINT BELOW PLACE CARDS USING THE MINI LALALOOPY DOLLS TO HOLD EACH ONE. WRITE A GUEST'S NAME ON EACH PLACE CARD
8. THE CHILD CAN TAKE HOME THE MINI LALALOOPY DOLL AT THEIR PLACE SETTING AS THEIR PARTY FAVOR





The Big Show Popcorn Cones

Makes 2

INSTRUCTIONS: PRINT THEN CUT OUT THE TWO TRIANGLES ON DOTTED LINES. ROLL THE SIDES OF THE CONE TOGETHER AND TAPE IN THE BACK. MAKE SURE NO POPCORN KERNELS CAN FALL THROUGH AT THE BOTTOM. FILL WITH POPCORN AND ENJOY!



Instructions

PRINT A PUZZLE AND A BACKGROUND FOR EACH CHILD. FOR THE PUZZLE - CUT OUT THE PIECES AND PLACE THEM IN A BAG FOR EACH CHILD. PROVIDE EACH CHILD A BACKGROUND SHEET, A GLUE STICK AND A BAG OF PUZZLE PIECES.





Puzzle

Instructions

PRINT A PUZZLE AND A BACKGROUND FOR EACH CHILD. FOR THE PUZZLE - CUT OUT THE PIECES AND PLACE THEM IN A BAG FOR EACH CHILD. PROVIDE EACH CHILD A BACKGROUND SHEET, A GLUE STICK AND A BAG OF PUZZLE PIECES.



Straw Decorations

Instructions

CUT OUT EACH STRAW DECORATION. USE A HOLE PUNCHER TO CUT OUT THE WHITE HOLES. THEN PUSH THE STRAW THROUGH THE HOLES. USE TAPE IF NECESSARY.

